

**4Dviz**

FOR PHOTO REALISTIC VISUALIZATION

# ***Furniture 3D Rendering***



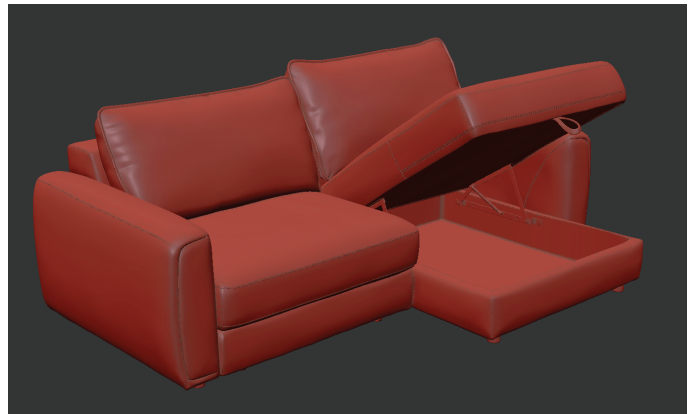
Product rendering is used in industries like furniture manufacturing, e-commerce, automotive, and architecture to create realistic, detailed images of products. It's essential for showcasing design features, textures, and functionality, enhancing marketing, and aiding in design validation. With the model, we can overlay textures to create realistic images, helping you visualize how the object will look in reality.



# ***High-Detail Furniture 3D Modeling with Functional Visualization***

These models are crafted for premium visualization, highlighting refined design details and realistic functionality such as movable parts, hidden storage, and interactive elements.

They allow clients to experience how each piece functions in real life, beyond static visuals, with clarity and elegance.



# ***Material & Texture Consistency Across Variants***

We maintain identical camera angles, lighting, and studio setup while applying different textures or finishes to the same furniture piece.

This ensures every variant delivers a consistent visual impression, making comparisons clear while preserving brand uniformity.



# ***Texture Variation on a Single Product***

We present the same chair or product in multiple texture options while maintaining identical geometry, camera angles, and lighting.

This ensures each material is displayed accurately, making texture comparison effortless while preserving a consistent and polished visual identity.



# ***Studio Consistency Across Product Lines***

Our renderings maintain a consistent visual language across all products, ensuring a unified brand identity regardless of form or category.

From individual pieces to complete collections, lighting, materials, and quality remain cohesive to strengthen brand recognition and impact.



# ***Multiple Studio one Furniture***



# ***Soft Surface Furniture***



## ***Hard Surface Furniture***



# ***AR Ready 3D Modeling***

We create high-quality, AR-ready 3D models compatible with all major model viewers, 3D configurators, and eCommerce platforms. Each asset is optimized for fast loading and smooth performance while maintaining realistic materials, accurate textures, and true-to-life color representation for modern interactive and online shopping experiences.



GLB Model viewing in



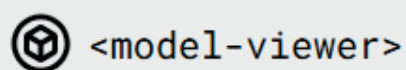
<model-viewer>



GLB Model viewing in



GLB Model viewing in

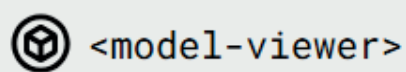




GLB Model viewing in



GLB Model viewing in





GLB Model viewing in

glTF Viewer



GLB Model viewing in

glTF Viewer



GLB Model viewing in



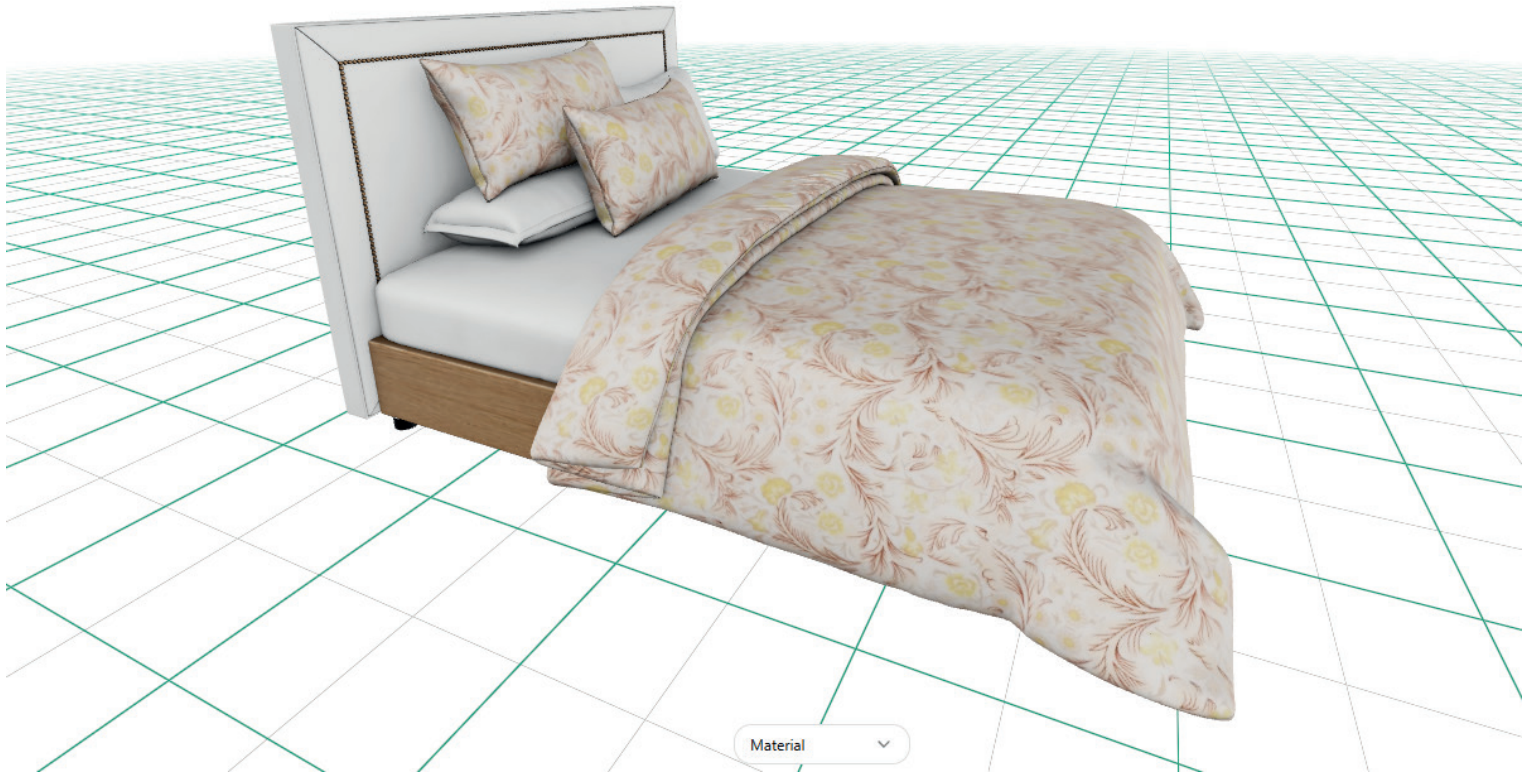
ONLINE 3D VIEWER



GLB Model viewing in



Convert  
3D



GLB Model viewing in



Convert  
3D



GLB Model viewing in



Convert  
3D

# ***Product Lifestyle Rendering***

Lifestyle rendering creates realistic images of products in everyday settings, showcasing them in real-life scenarios to enhance marketing appeal.



# Product variation



# ***We Build Lasting Partnerships***

Our clients don't just return for more—they enthuse about our work. They know we deliver quality, on time, every time. Here's why they love working with us -

- ◆ **Exceptional Quality:** We ensure every project exceeds expectations with meticulous attention to detail.
- ◆ **Timely Delivery:** We respect your deadlines and consistently deliver on schedule.
- ◆ **Innovative Solutions:** Our team brings creativity and state-of-the-art technology to every project.
- ◆ **Transparent Communication:** We keep you informed every step of the way, ensuring a seamless process.
- ◆ **Customer-Centric Approach:** Your satisfaction is our priority, and we go the extra mile to achieve it.

Join the growing list of clients who trust us for their 3D rendering needs and experience the difference we make.

Contact us today at [c@4dviz.com](mailto:c@4dviz.com) to start your project

